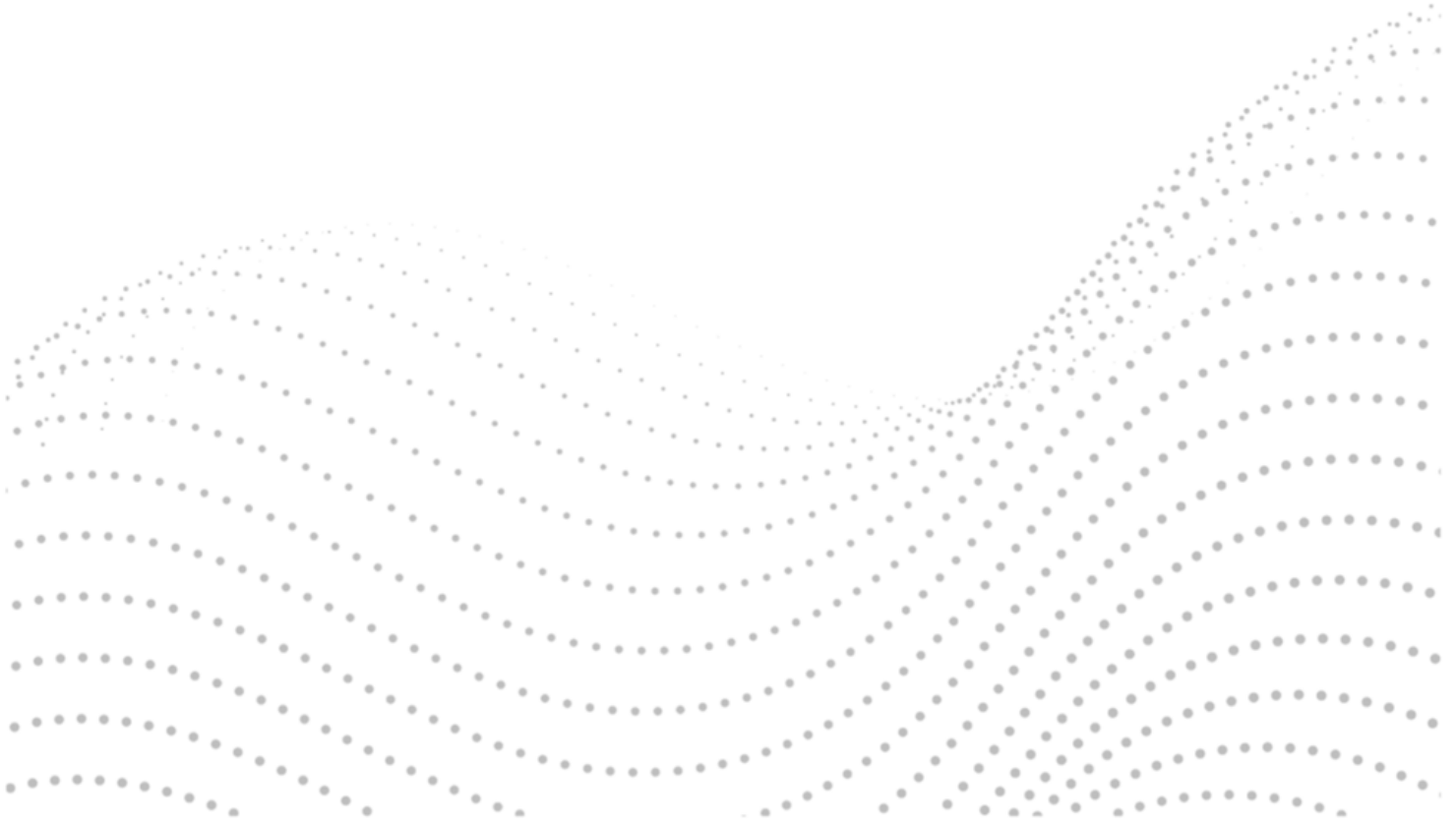


Sensor Handling & Use Guide (Amperia™ System)



VERSION 1.0
DATE OF ISSUE: 24 Apr. 2026

For research use only. Not for use in diagnostic procedures.



1 Purpose and Scope

This document provides guidance on the **storage, handling, and use of Amperia™ sensors** to support consistent performance and reliable assay results.

It applies to the following Amperia™ sensor types:

- Protein A Sensor | Antibody Quantification (IgG) (SKU: SN-001)
- Protein G Sensor | Antibody Quantification (IgG) (SKU: SN-006)
- His-Tag Sensor | Tagged Protein Quantification (SKU: SN-005-10)
- Streptavidin Sensor | Universal (SKU: SN-002-10)

Sensors are supplied as **sensor strips** in two formats:

- Individually packaged sensor strips (**Figure 1, left**)
- Bulk-packaged sensor strips in holder format (**Figure 1, middle**)



Figure 1. Amperia™ sensor strip formats and handling: individually packaged (left), bulk holder format (middle), and correct handling (right). Images shown are for illustration purposes only and may vary depending on specific product configuration.

For full assay workflows and kit-specific instructions, refer to the relevant assay documentation or visit: <https://www.abselion.com/assay-kits/>

2 Storage Conditions

Amperia™ sensor strips should be stored and handled under controlled conditions to maintain performance.

- Store at **2–8 °C**
- Keep sensors in their original foil pouch until use
- Do not freeze

After opening:

- **Individually packaged sensor strips:** use immediately after opening
- **Bulk-packaged sensor strips:** remove only the number of sensor strips required, then return the holder to the foil pouch and reseal promptly

Before use, allow sensors to **equilibrate to room temperature**.



3 General Handling Principles

Amperia™ sensor strips should be handled carefully to avoid damage and ensure consistent performance.

- Handle with clean gloves
- Hold the sensor strip by the plastic frame (non-active area)
- Avoid contact with the sensing tips (electrode region), contact with other areas is not critical (**Figure 2, right**)

Do not:

- Touch, press, or scratch the sensing area
- Bend, twist, or drop the sensor strip
- Use tweezers or hard tools

Use sensor strips **promptly after removal** from packaging.

4 Sensor Formats and Use

4.1 INDIVIDUALLY PACKAGED SENSOR STRIPS

- Open the foil pouch **immediately before use**
- Remove the sensor strip and handle as described in **Section 3**
- Insert directly into the system as per assay instructions

Note: Individually packaged sensor strips are **single-use within a run** and should not be returned to the packaging once opened.

4.2 BULK-PACKAGED SENSOR STRIPS (HOLDER FORMAT)

Sensor strips are supplied in a **holder with an internal rack system**.

- Keep the holder **upright** during use
- Sensor strips are stored vertically in individual slots

To access and remove sensor strips, see **Figure 2**:

- Pull the internal rack out **fully until it reaches its stop position** using the finger access area
- Do not attempt to remove the rack from the holder
- Grip the sensor strip at the **non-active areas of the strip** and avoid the electrode tips
- Carefully **slide** the sensor strip out of the slot

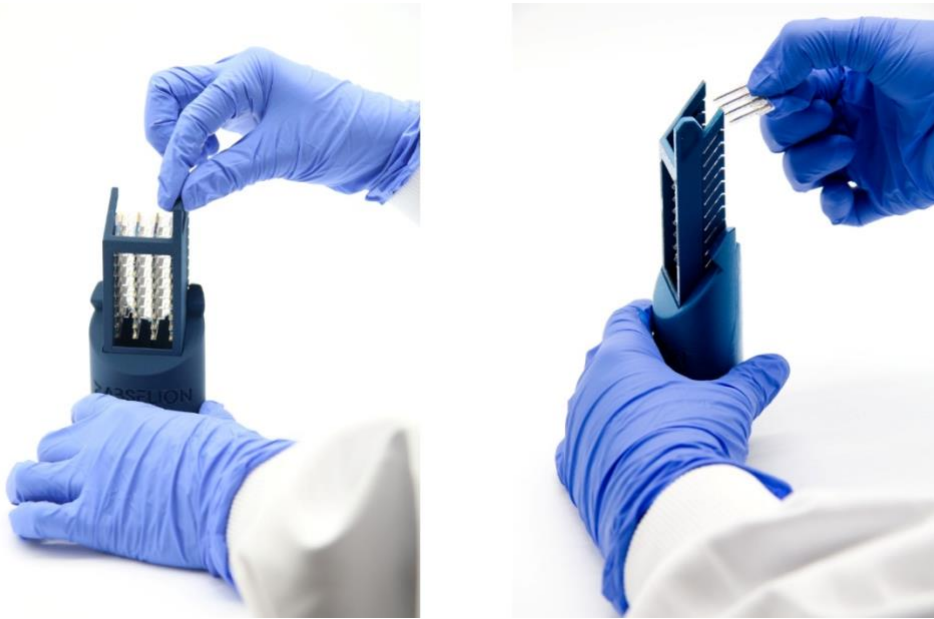
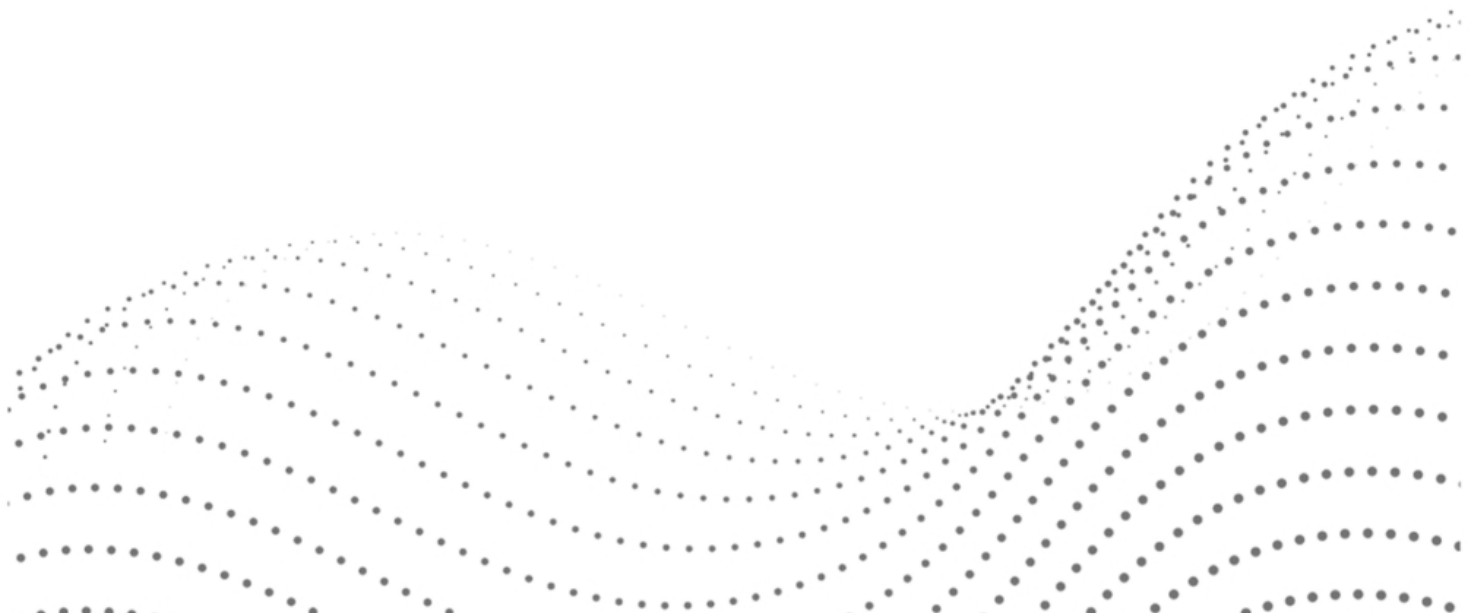


Figure 2. Accessing sensor strips from bulk holder: lifting the internal rack (left) and removing a sensor strip (right). Images shown are for illustration purposes only and may vary depending on specific product configuration.

Notes: Do not force sensor strips out of the holder, and ensure remaining sensor strips stay aligned. Return the holder to the foil pouch and reseal using the zip seal after use.

5 Final Guidance

Proper storage and handling of Amperia™ sensor strips are essential to maintain performance and ensure reliable results. Sensor strips should be kept under recommended conditions, handled only by the plastic frame, and used promptly after removal. Care should be taken to avoid contact with the sensing area and unnecessary exposure to ambient conditions.



MANUFACTURER

HexagonFab Ltd. (trading as **Abselion™**)

Unit 1, Cambridge House
Camboro Business Park
Oakington Road, Girton
Cambridge, CB3 0QH
United Kingdom



Scan to access User
Manuals & Guides

For product information or technical support, please contact: support@abselion.com